

بِسْمِ اللّٰهِ الرَّحْمٰنِ الرَّحِیْمِ



Written by Hack_1Killer

GREAT & SETUP ACTIVE DIRECOTRY (AD)

:

**ACTIVE DIRECTORY
.WINDOWS 2000 SERVER**

Windows2000

Active Directory

Active Directory

Server

Domain Controller (DC)

Stand alone Server

.Windows 2000 server

Active Directory

:

Death To Israel

www.Server4Arb.com

:

Start > Run > dcpromo.exe

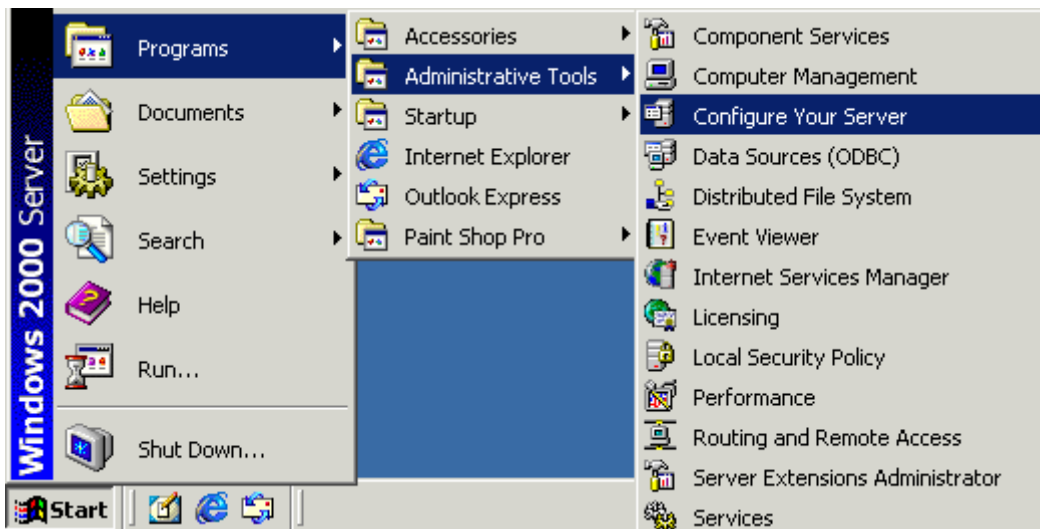
Programs

Administrative tools

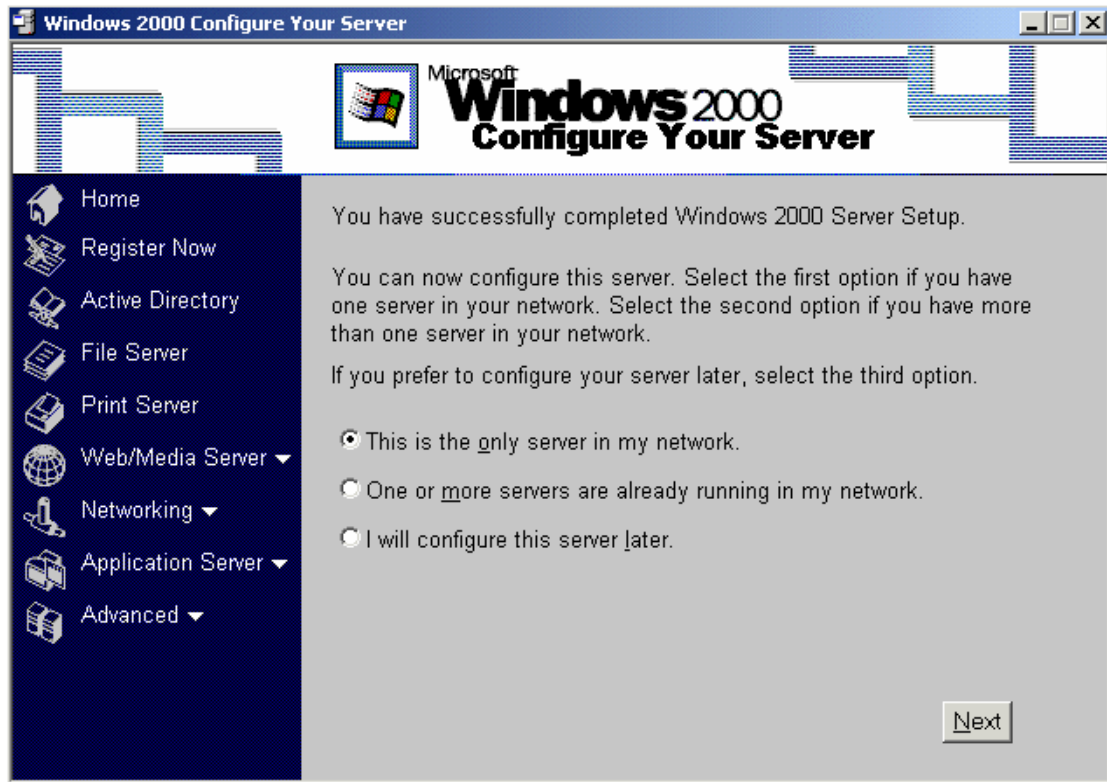
: Control Panel

Start

Administrative tools >> Configure your server



:



Network Infrastructure

AD

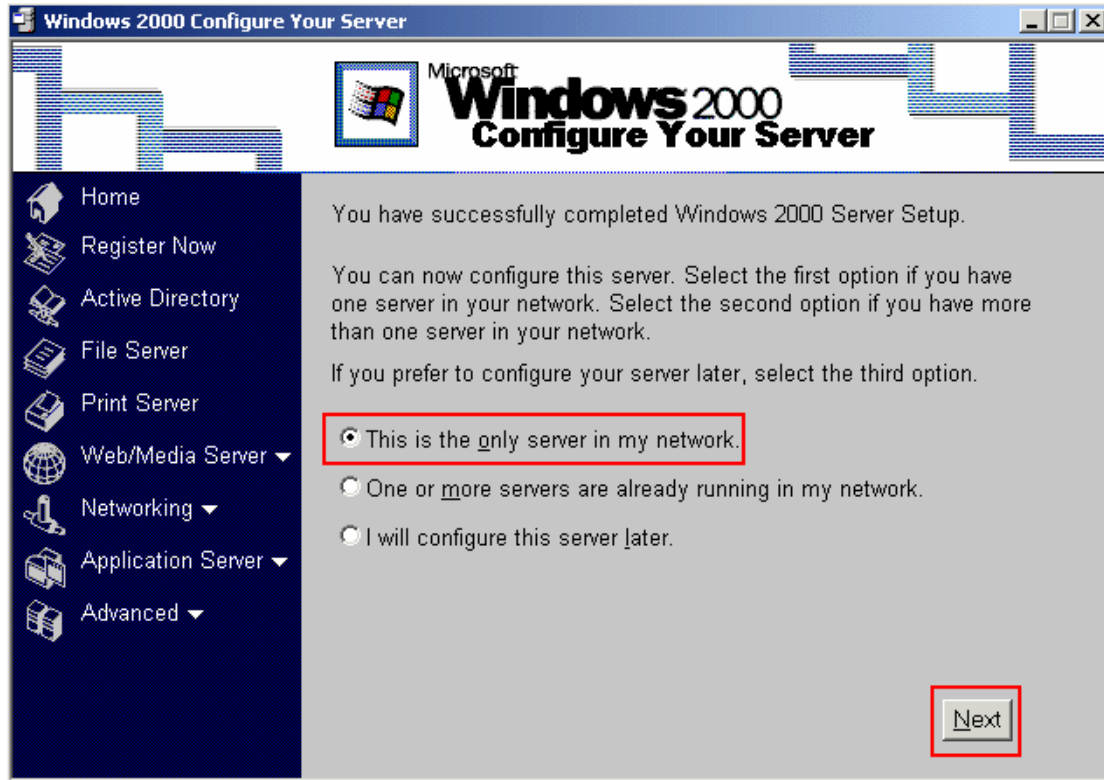
.

.LAN

WAN

.LAN

: **This is the only server in my network**



: **next**

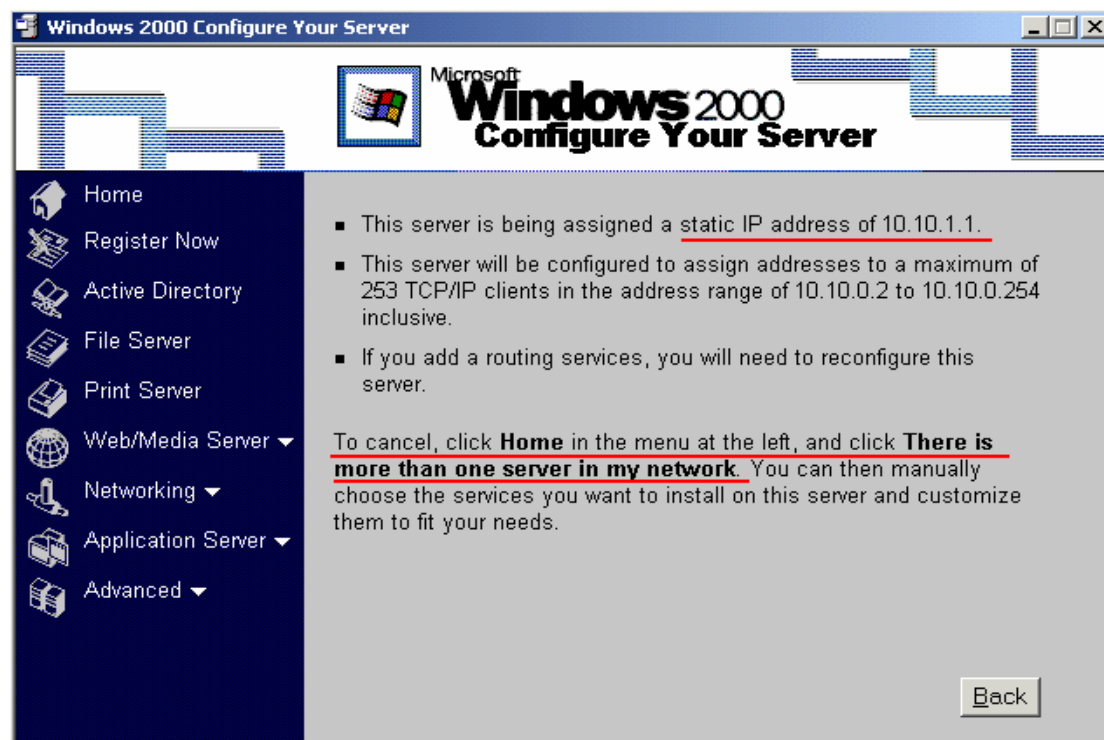
(**Active Directory** .
) **DHCP Server** .
 DNS Server -Domain Name services .

:



Show more Details

:



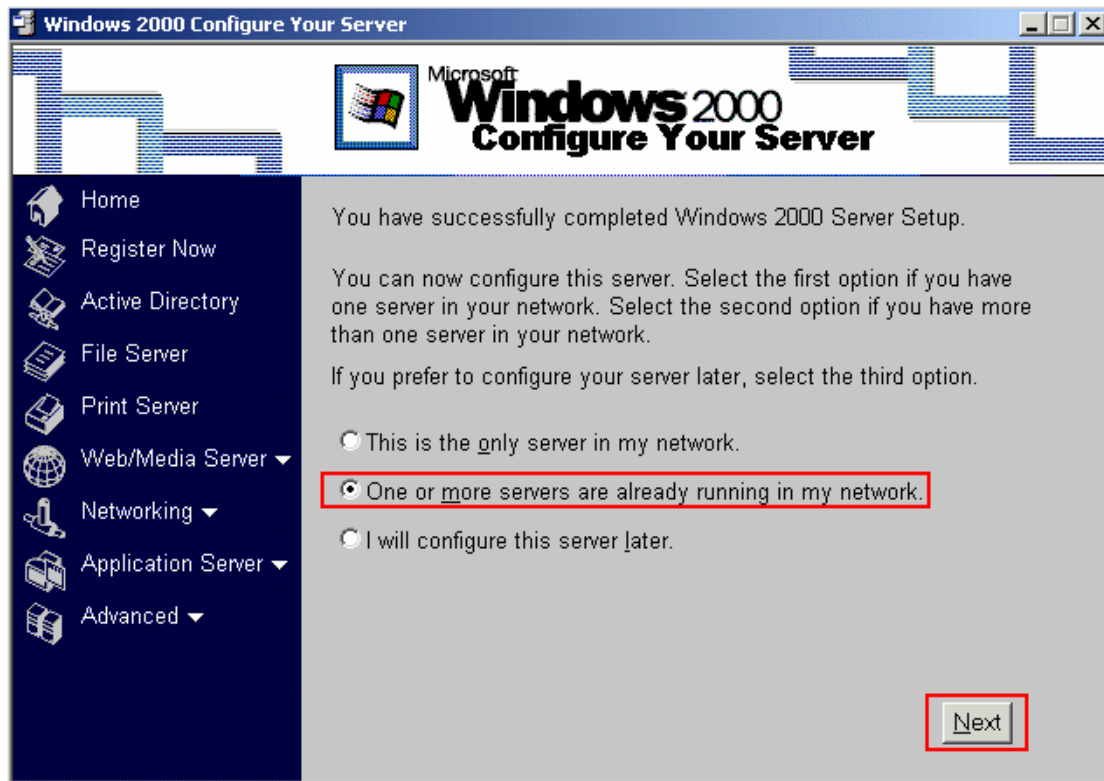
IP Address , , ,

.Private IPs

:

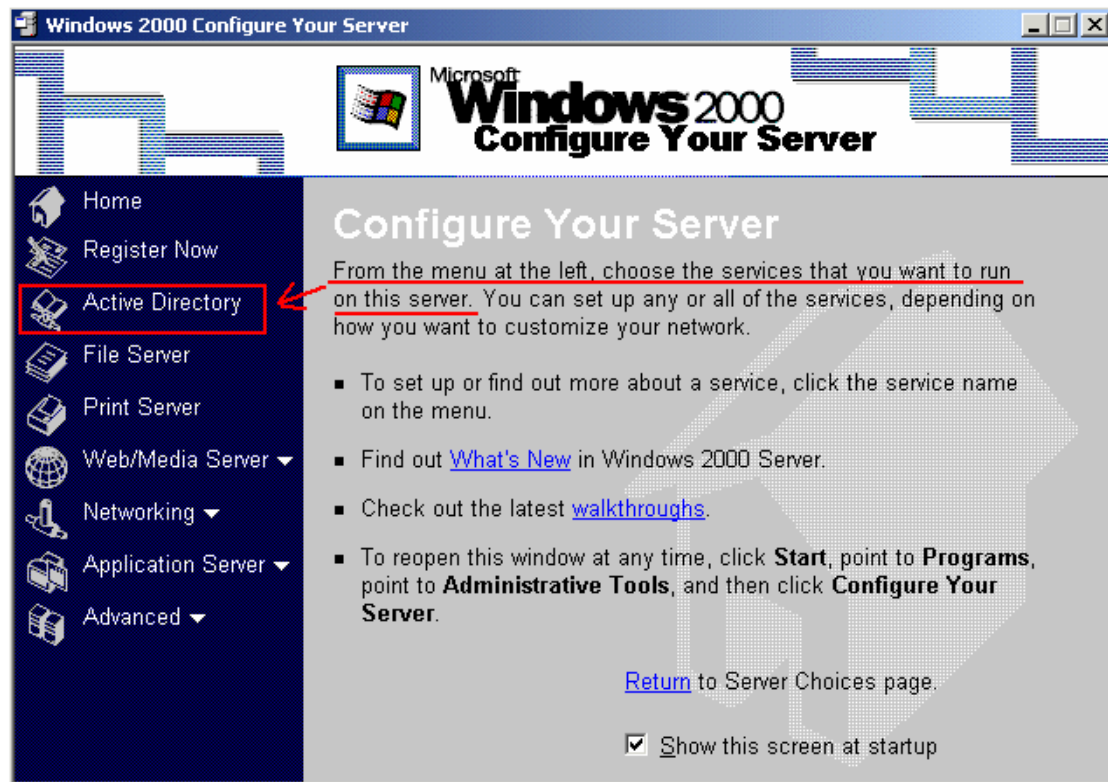
One or more servers already are running on my network

:



next

:



Active Directory

:

Microsoft
Windows 2000
Configure Your Server

Active Directory

Active Directory stores information about network objects — such as user accounts and shared printers — and provides access to that information. To make this server a [domain controller](#), you must install Active Directory.

The Active Directory Installation wizard configures this server as a domain controller and sets up DNS if it is not already available on the network. Use this wizard for the following scenarios:

- **No existing domain controller** — sets up your server as the first domain controller on the network.
- **Domain controller already on network** — sets up your server as an [additional domain controller](#), new [child domain](#), new [domain tree](#), or new [forest](#).

Important
You need a partition formatted with the version of [NTFS](#) used in Windows 2000 to host Active Directory.

Caution
Be sure you are familiar with Active Directory and how it will affect this server before you proceed.

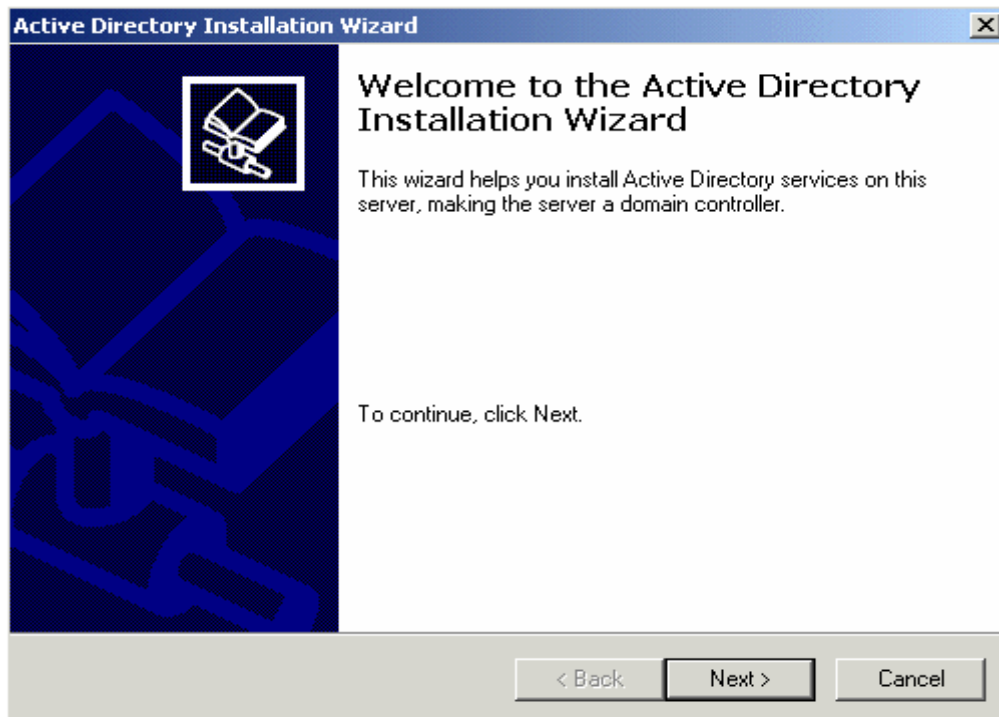
[Learn more](#) about Active Directory and domain controllers to determine whether you need to set up Active Directory.

[Start](#) the Active Directory wizard

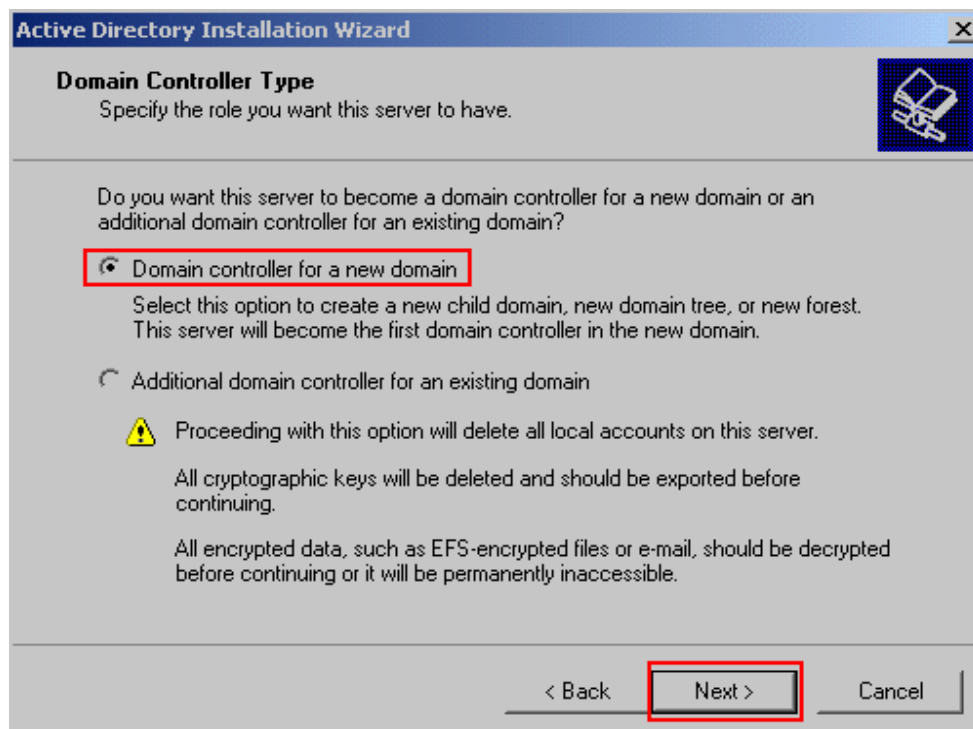
After you finish with the wizard, your server will restart and the Configure Server screen will appear. Return to the Active Directory screen to manage your computer and user accounts.

**Hard Disk Partition :
FAT Or FAT32 NTFS**

: **Start the Active Directory Setup**



: **next**

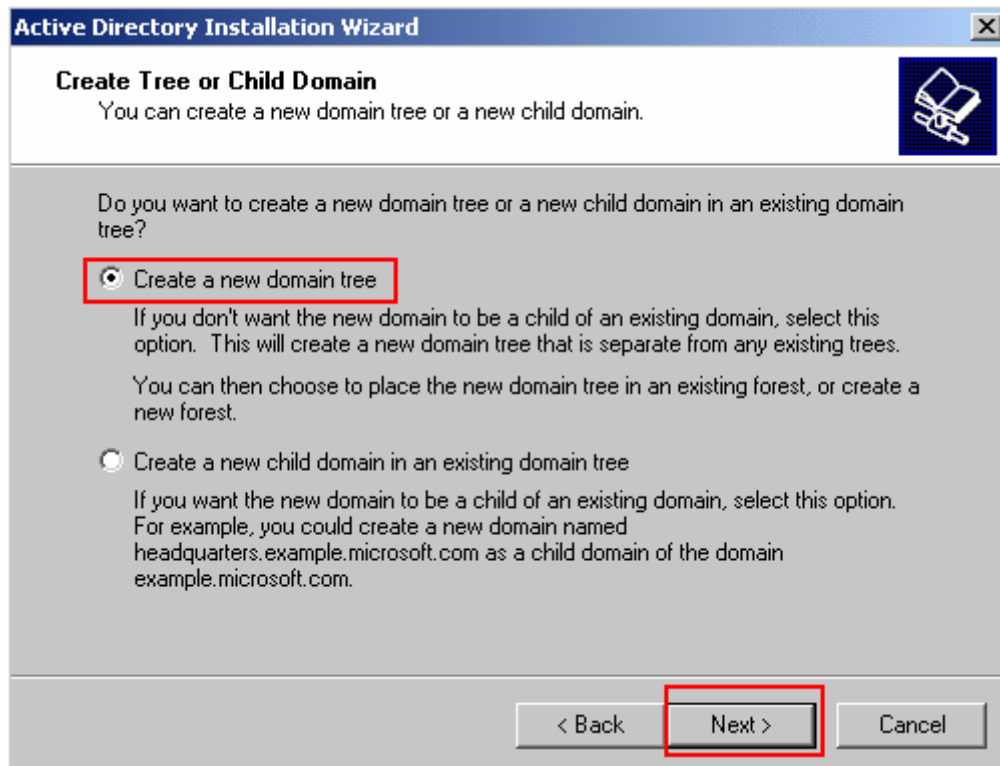


Domain Controller for the new domain :

.next

:

Next



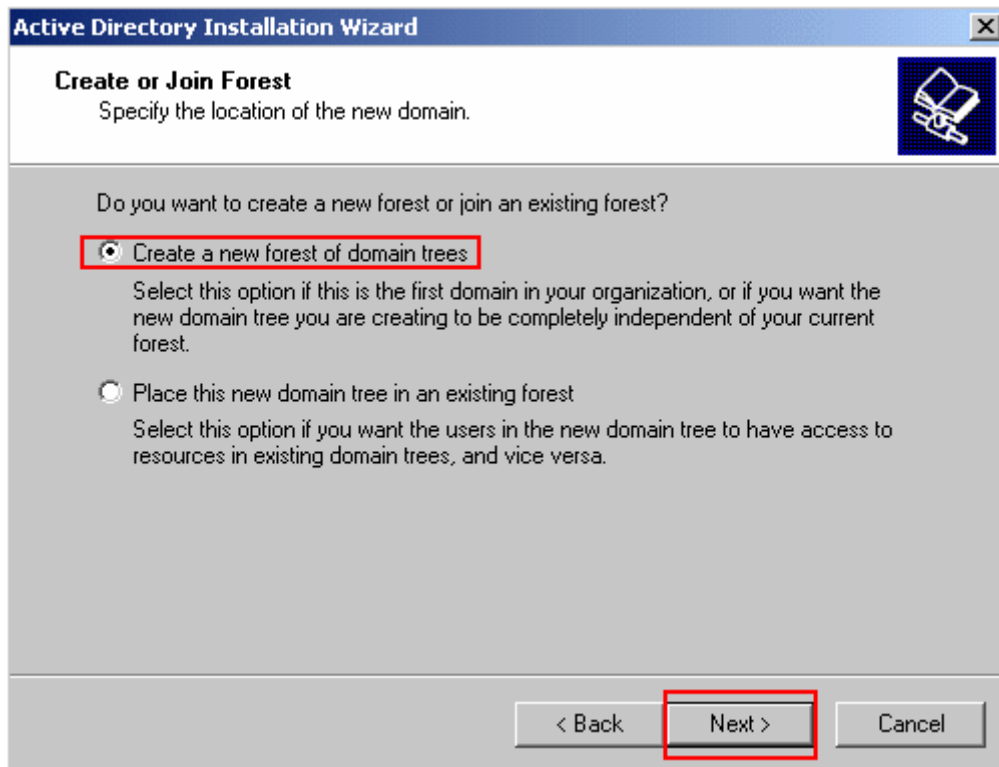
Domain
Tree
Domain

Domain **Child Domain** **For Main Domain**

child **Server4Arb.com** **Tree**

BillGates.Server4Arb.com **domain**

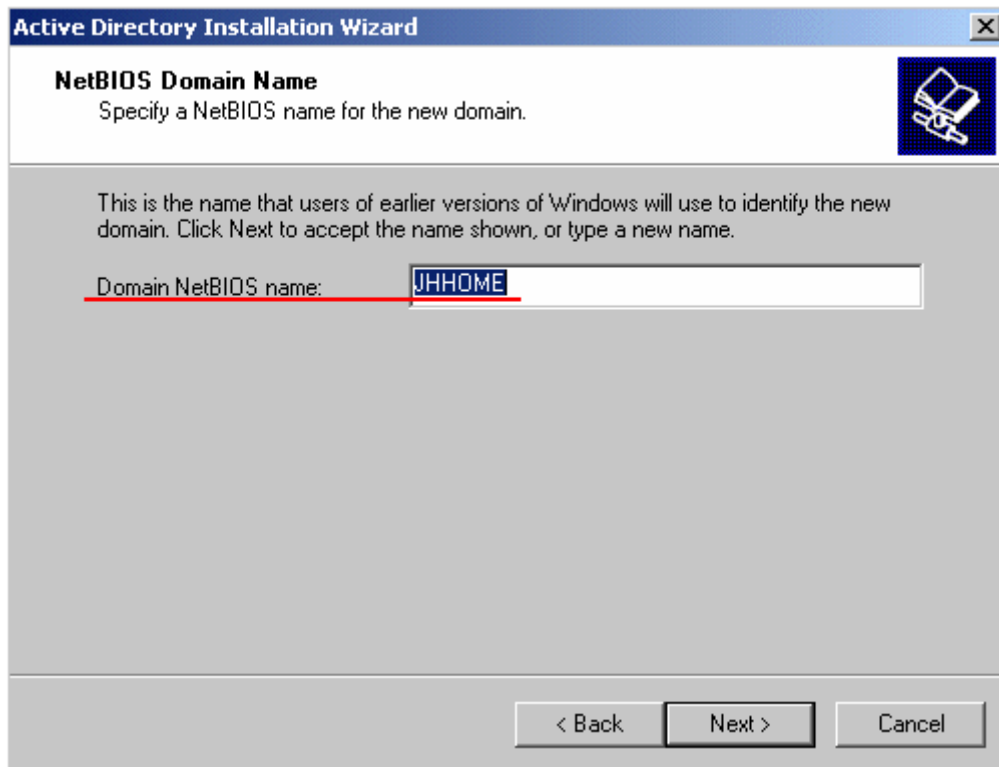
: next



Forest Tree
.We have to define a forest for our tree

Forest Server4Arb.com
: next

www.Server4Arb.com



DNS

Server4Arb.com

.

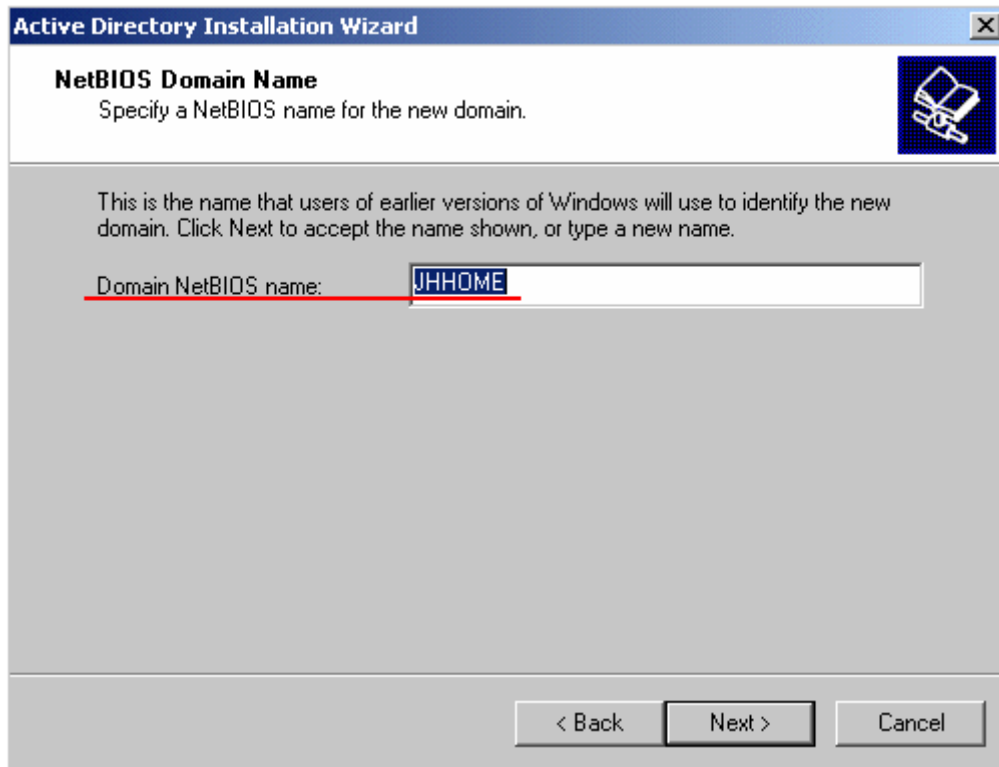
:

Full DNS name

. **Ly net com**

:

next

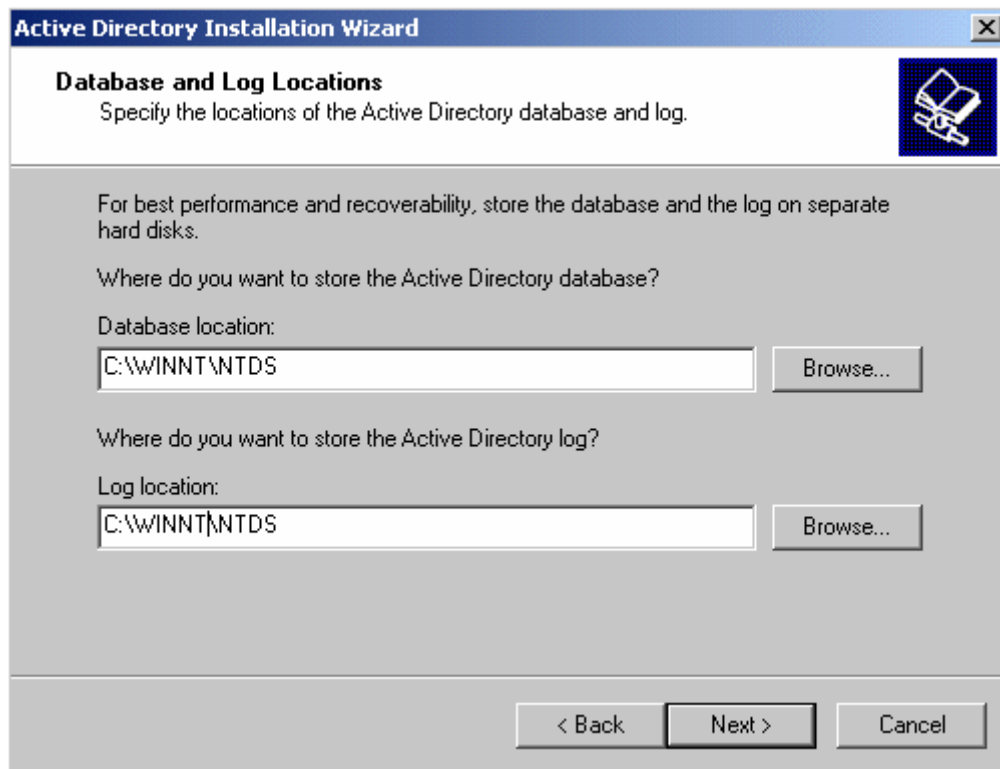


NetBIOS Name

.Windows95/98/ME ,Windows NT4:

Server4Arb Com

: next



Hard

Log File

.next

Desk

Network "

SYSVOL

."Neighborhood

User

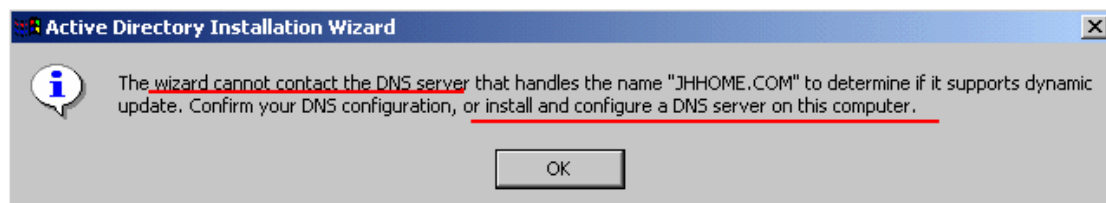
"Or "My Network Places

NTFS

Permissions

:

next

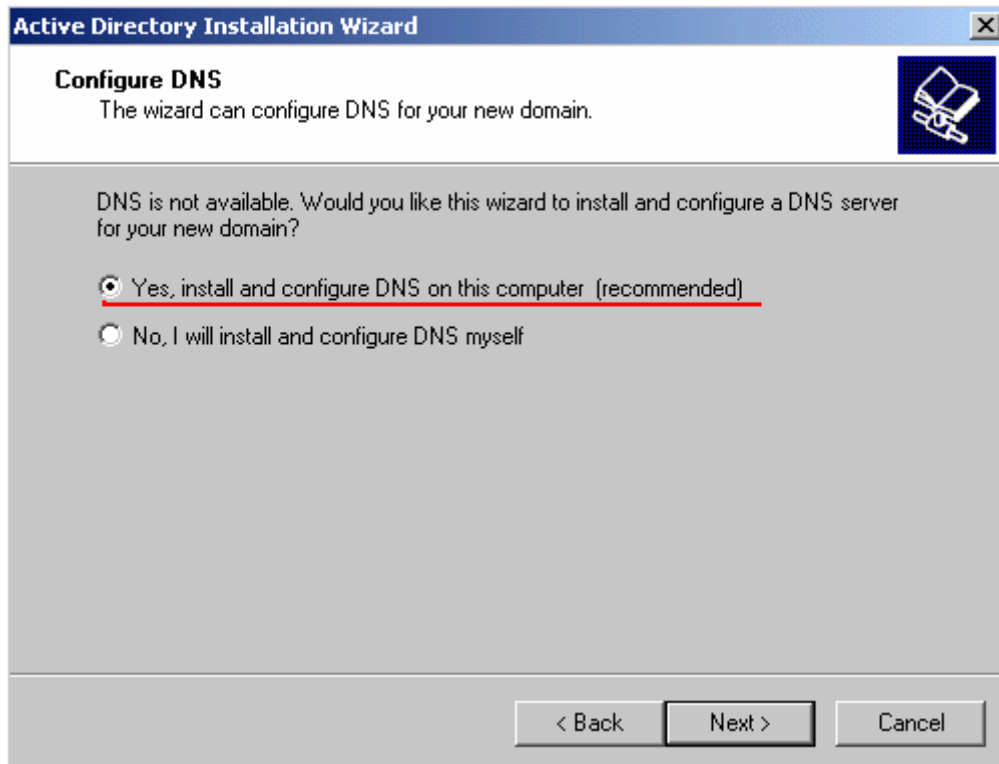


DNS

DNS

:

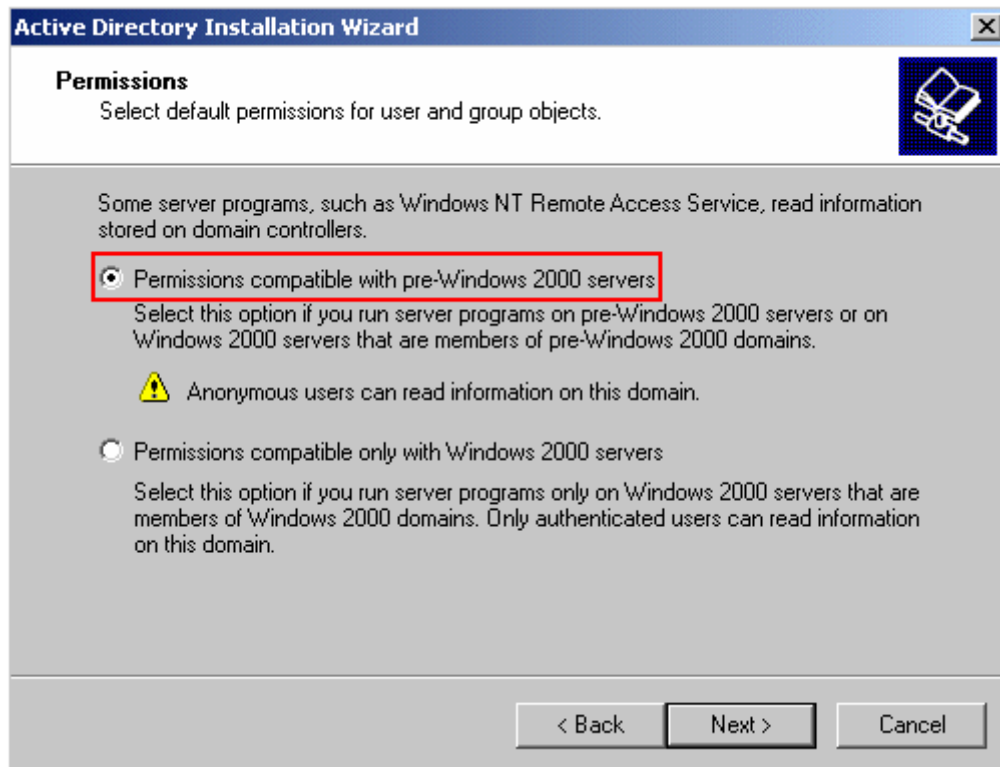
OK



next

DNS

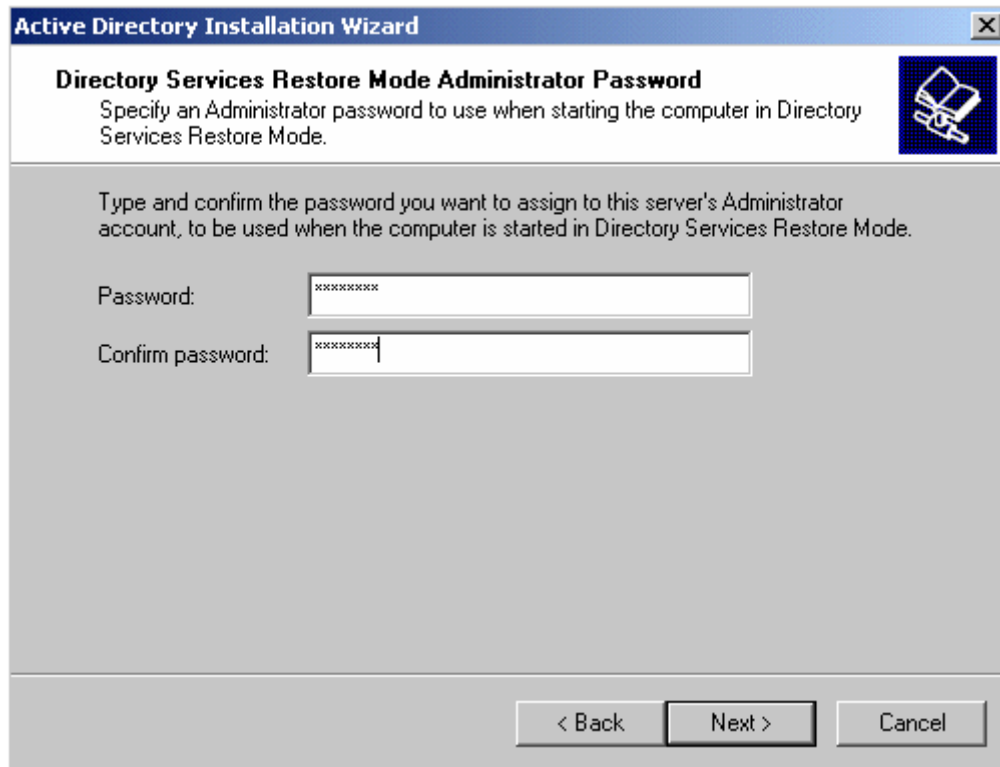
:



: **win2000**

.Windows95/98/ME/NT4

: **next**

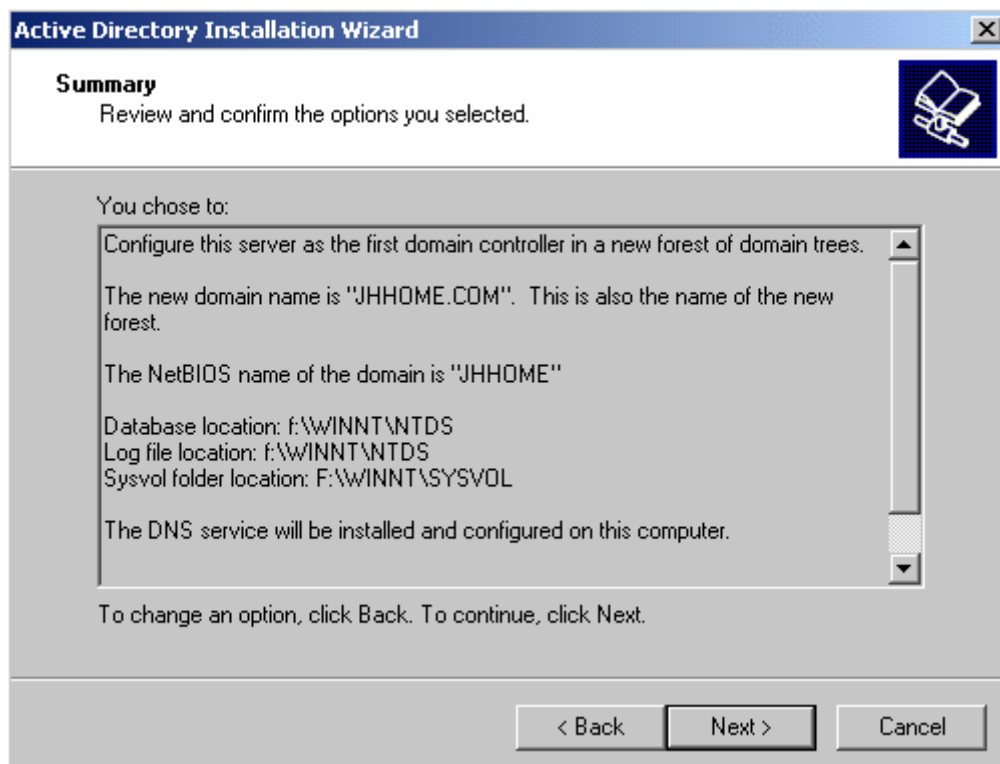


Restore operation

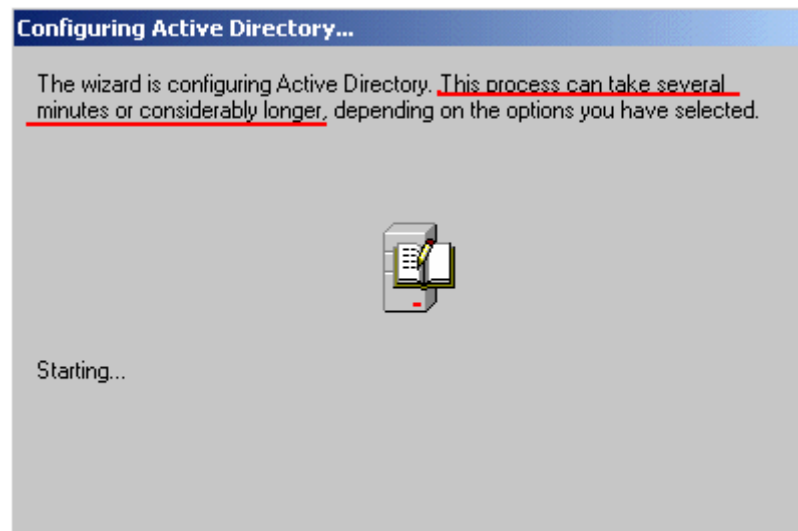
Password

:

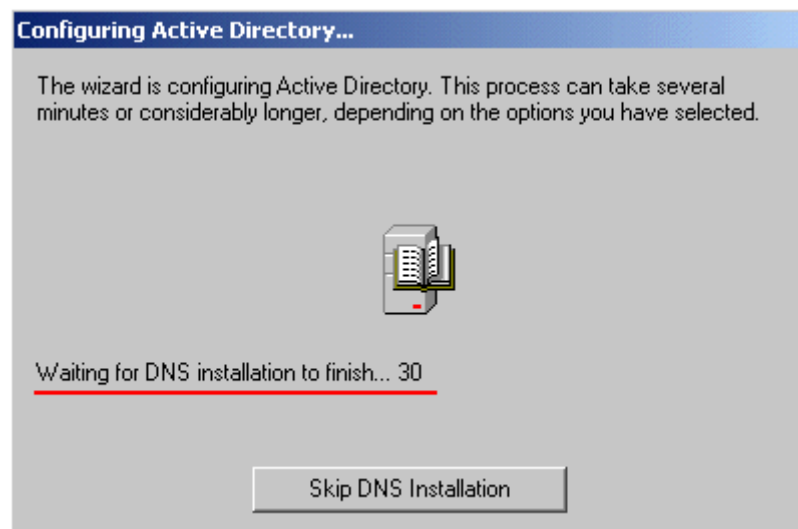
next AC



: next



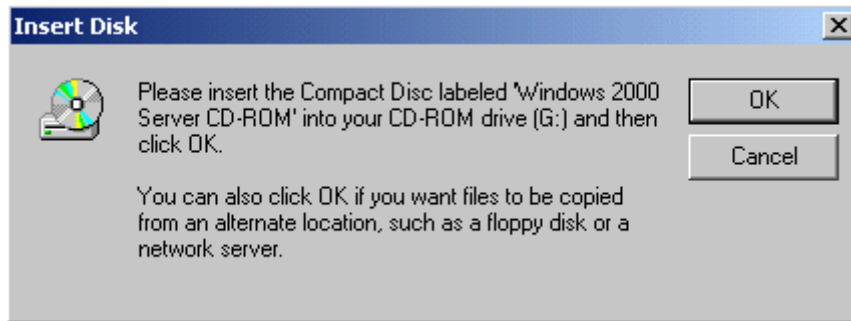
: **! Please, just WAIT**



www.Server4Arb.com

:

DNS

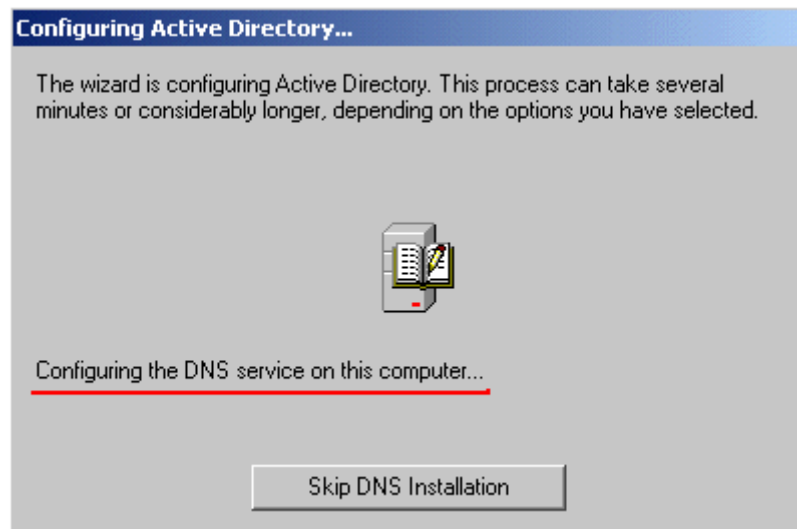


Windows 2000 Server

CD

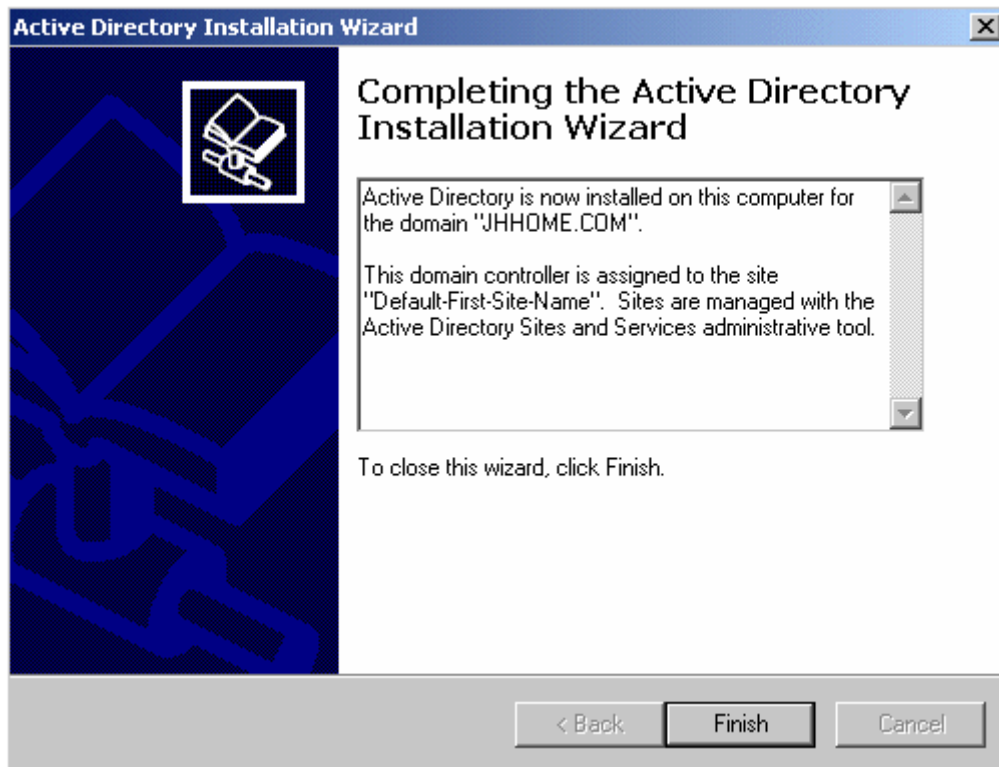
:

ok



:

DNS



:

next



.

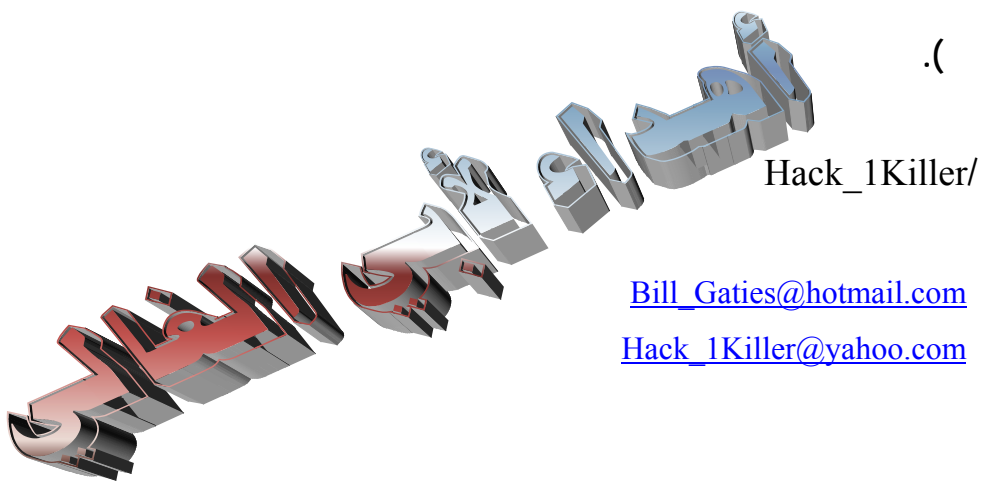
Restart

Domain

Active Directory

.Controller

Next topic: How limited allowing employee to using some space



All rights reserved 2005

Microsoft
CERTIFIED
Systems Administrator

Microsoft
CERTIFIED
Systems Engineer